



European  
Commission

Rectangular Snip

# FOREST FIRES

## Sparking firesmart policies in the EU

*R&I Projects for improved Forest Resilience and Management*

Europe's forests are facing increasing demands and major challenges, from climatic changes and increased vulnerability to storms, droughts, insects and forest fires.



Improve the resilience of forests to climate change



Restore degraded ecosystems



Promote the bio-economy while preserving biodiversity



Increase carbon stored in soil and forests



Increase the use of long-lasting wood and bio-products

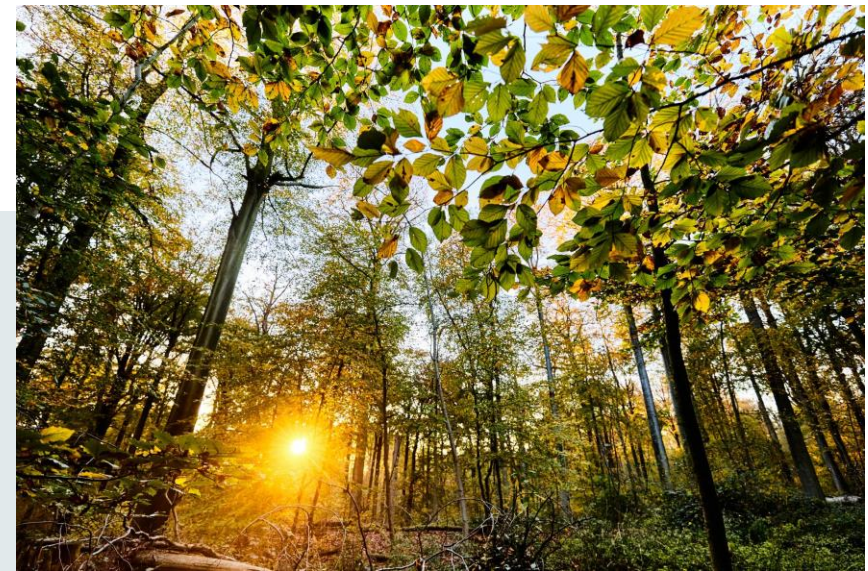


Support production of sustainable food

## EU Green Deal priorities for Forest resilience

*the new EU forest strategy for 2030*

*aims to improve the quantity and quality of EU forests,  
and adapting EU forests to the new extreme events and uncertain climatic conditions*



**Multi-functionality is at the core of the strategy**

**... while there is a need to strike a balance between the environmental,  
social and economic aspects of sustainable forest management**

# EU investments to support R&I on Forests

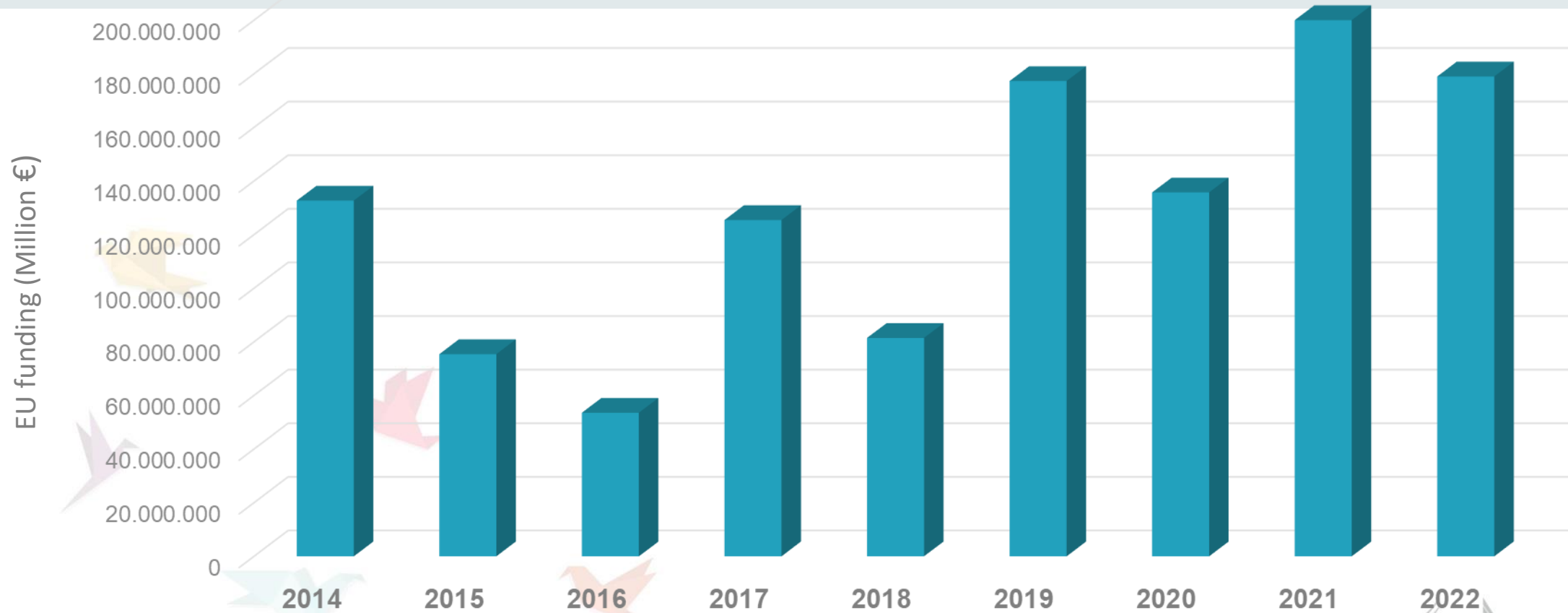


**Horizon 2020 (2014 – 2020)**

**Horizon Europe**



**Horizon Europe (2021 – 2027)**



*..decision-making regarding sustainable forest management becomes more and more complicated and complex.*



OneForest develops a **multi-criteria decision support system** to illustrate synergies and trade-offs between forest ecosystem services for a reliable wood supply with 30-40 years simulations

[www.oneforest.eu](http://www.oneforest.eu)

Multiforest developed novel approaches to evaluate the **(in)coherence among forest policies**

<https://forestvalue.org/project/multiforest/>



**MultiForest**

*...forest stakeholders need better scientific knowledge to deploy innovative afforestation schemes and new adaptation strategies.*



B4EST contributed to increasing forest resilience and productivity with adapted forest genetic resources through **new adaptive breeding strategies**

<https://b4est.eu/>

RESONATE helped to determine how past and current site factors and management influence forest system resilience in different forest types and management systems across Europe.

<https://resonateforest.org/>

# Forest fires are a serious and increasing threat throughout Europe

They can have a huge economic impact and lead to a tragic loss of life

Each year in the EU



65 000 forest fires



€3 billion – economic damage from wildfires



95% are caused by humans



480 000 ha of forest areas are burned – 1 million ha in 2017



€2.2 billion – spent by EU governments and public agencies to fight forest fires



34 firefighters and other people killed (611 killed 2000-2017)

More people will be at risk, for longer periods of time



longer fire seasons



more fire-prone areas



new wildfire context with mega-fires



European Commission

# Linking wildfire risk and forest resilience



**FOREST FIRES**  
Sparking firesmart policies in the EU

Research & Innovation Projects for Policy



Research and Innovation

Find all R&I Projects for Policy reports at:  
<http://ec.europa.eu/research/p4p>



Improve coordination between EU and national policies and across sectors



Improve fire preparedness through **participative, multilevel governance**



Support **proactive prevention** operations



Integrate fire management with **sustainable forest management**



Reinforce the EU's **disaster response capacity**

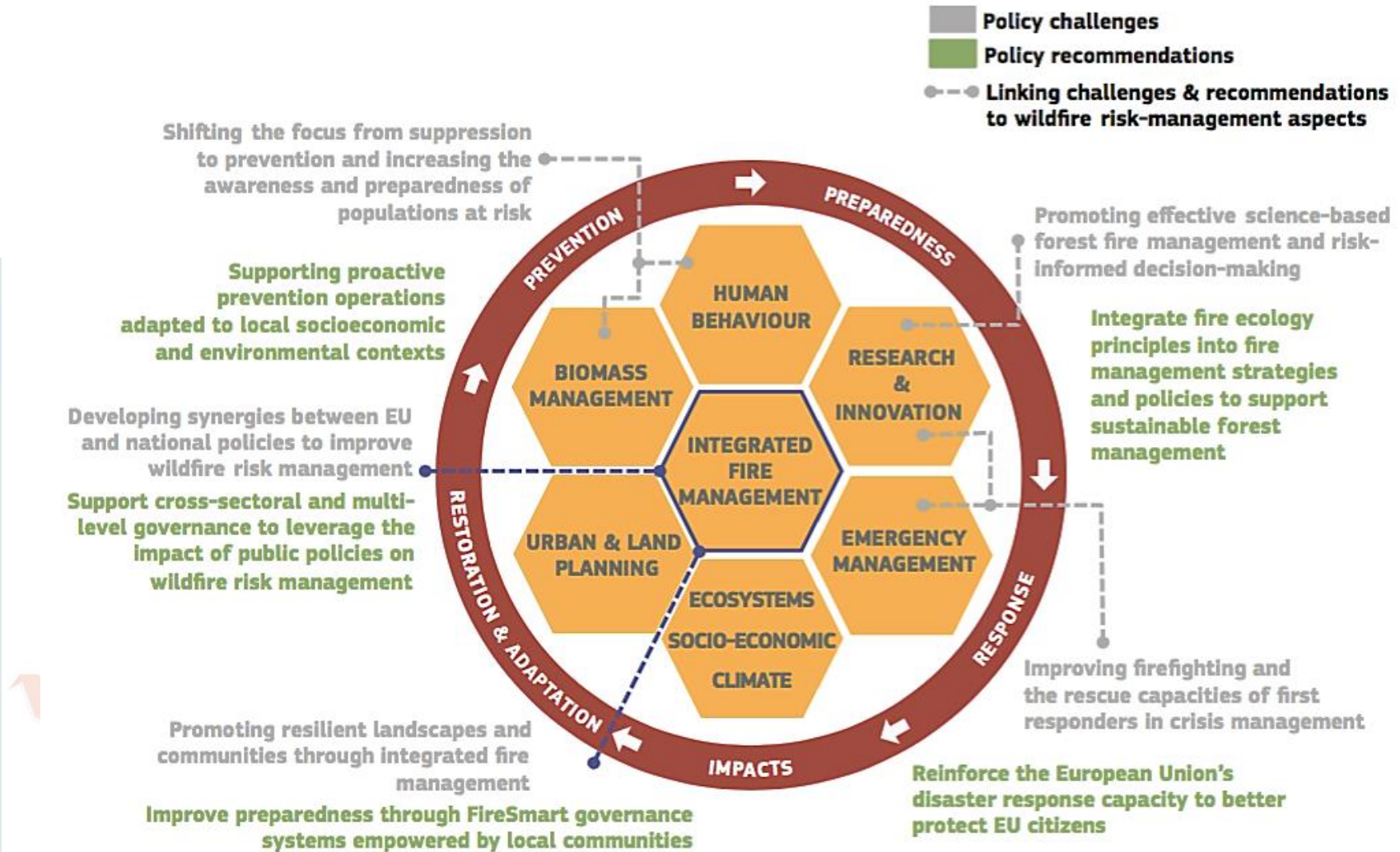


# Integrated Fire Management: from challenges to recommendations

Integrated fire management is a holistic concept approach for planning and operational systems which considers the competing demands of forest and land uses with the potential risks they may involve

## Objective

manage wildfires in such a way that the safety of people and housing, economic growth and ecosystem services are maintained or increased



# Focus on forest fires – from resilience on wildfire risk management: cluster of EU-funded projects



## R&I recommendations and way forward for improved forest resilience

- Promote the interaction across the policy domains to improve policy coherence
- Optimal strategy for the future development of forests lies in the valorisation of all forest roles and functions combined with effective prevention measures for forest fires and other hazards
- Develop forest strategies to guide diversification of forest managements to sustain multiple ecosystem services at the landscape level

### Way forward for more resilient landscapes and forests:

- Bioeconomy strategy with competitive value chains - Forest multifunctionality
- Payments for ecosystem services
- EU platform for fire science interface with managers and policy makers
- Strong demo case studies/innovative labs that will facilitate repetition elsewhere
- Governance mechanisms based on broad social participation

## MORE INFORMATION

Read the full R&I Projects for Policy report on **forest fires**:  
[ec.europa.eu/research/environment/forestfires](https://ec.europa.eu/research/environment/forestfires)

### See also:

[https://ec.europa.eu/agriculture/forest/strategy\\_fr](https://ec.europa.eu/agriculture/forest/strategy_fr)

[http://ec.europa.eu/echo/what/civil-protection/mechanism\\_en](http://ec.europa.eu/echo/what/civil-protection/mechanism_en)

<https://ec.europa.eu/research/environment/index.cfm?pg=climate>



**#EUMegaFires**



**#ResearchPolicyEU**



**@DisastResilEU**



**@EUScienceInnov**



Find all information on EU Research & Innovation at:

[https://ec.europa.eu/info/research-and-innovation\\_en](https://ec.europa.eu/info/research-and-innovation_en)

*Thank you!*