



INTEGRATED CHALLENGES STRATEGY

Integrated Fire Management (IFM) seeks to harness the ecological benefits of wildfires while minimising the damage they can cause to communities, infrastructure, and natural resources.

The views on fire management and governance have evolved towards a **more comprehensive and holistic approach**, recognising that it requires a multifaceted strategy linking the entire fire cycle and its components: 1) Prevention & Preparedness; 2) Detection & Response; 3) Adaptation & Restoration.

LIVING LAB VOICES - WISHLIST

Coherent multiactor wildfire governance

- National wildfire dialogue & aligning visions across stakeholders
- Full government ownership (cross department collaboration)

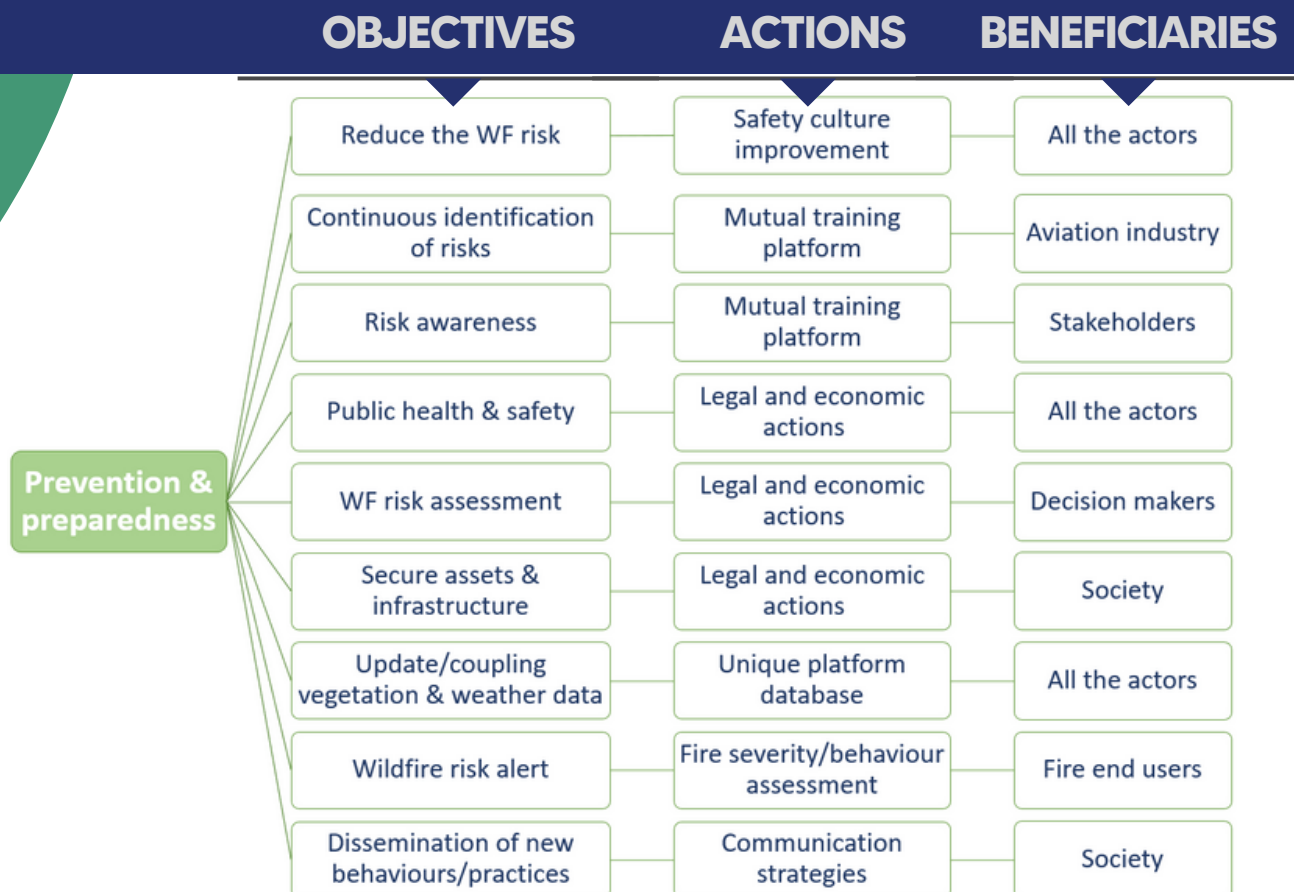
Mobilise resources for effective action

- Training for response & strategies for prevention of EWE in Nordic countries

Training and education for targeted stakeholders

- Capacity building for targeted stakeholders (policy makers and media)
- A mechanism for cross national knowledge sharing

WHAT NEEDS TO BE OVERCOME?





INTEGRATED CHALLENGES STRATEGY

Through collaboration among stakeholders and adopting a proactive approach and innovative strategies, IFM can lead to long-term resilient ecosystems, reduced risks to human life and property, and sustainable land management practice. These key principles contribute to **building more resilient communities and ecosystems in the face of wildfire challenges.**

LIVING LAB VOICES - WISHLIST

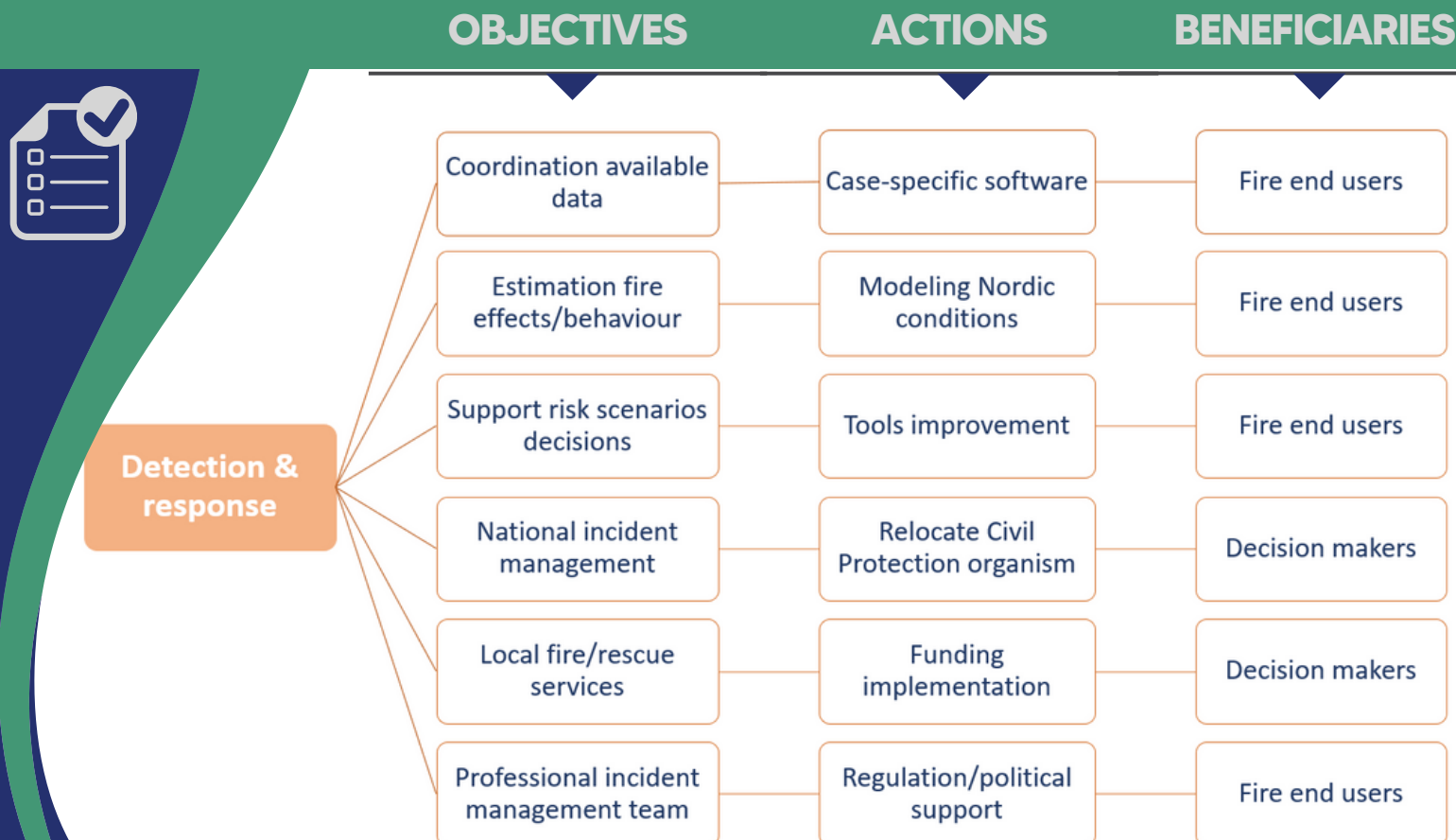
Mobilise resources for effective action

- Establishment and implementation of a mutual training platform for stakeholders for EWE suppression

Safe and improved early attack and suppression

- Increase the safety, efficiency, and operational awareness of Forest Firefighters during emergencies
- Training for response

WHAT NEEDS TO BE OVERCOME?





INTEGRATED CHALLENGES STRATEGY

Mapping the stakeholders involved in IFM helps identify their interests, roles, and potential contributions to wildfire management efforts. However, it should be complemented by a comprehensive approach that includes adequate resources for fire agencies, advanced technology for fire detection and suppression, research on fire behaviour and ecology. Also, collaboration between stakeholders, including government agencies, communities, and environmental organisations.

LIVING LAB VOICES - WISHLIST

Smarter post-fire restoration and recovery

- Overview of plans and frameworks to deal with type 3 wildfires
- Capacity building for targeted stakeholders (policy makers and media)
- National wildfire dialogue

WHAT NEEDS TO BE OVERCOME?



OBJECTIVES

ACTIONS

BENEFICIARIES



CHALLENGES

