



INTEGRATED CHALLENGES STRATEGY

Integrated Fire Management (IFM) seeks to harness the ecological benefits of wildfires while minimising the damage they can cause to communities, infrastructure, and natural resources.

The views on fire management and governance have evolved towards a **more comprehensive and holistic approach**, recognising that it requires a multifaceted strategy linking the entire fire cycle and its components: 1) Prevention & Preparedness; 2) Detection & Response; 3) Adaptation & Restoration.

LIVING LAB VOICES - WISHLIST

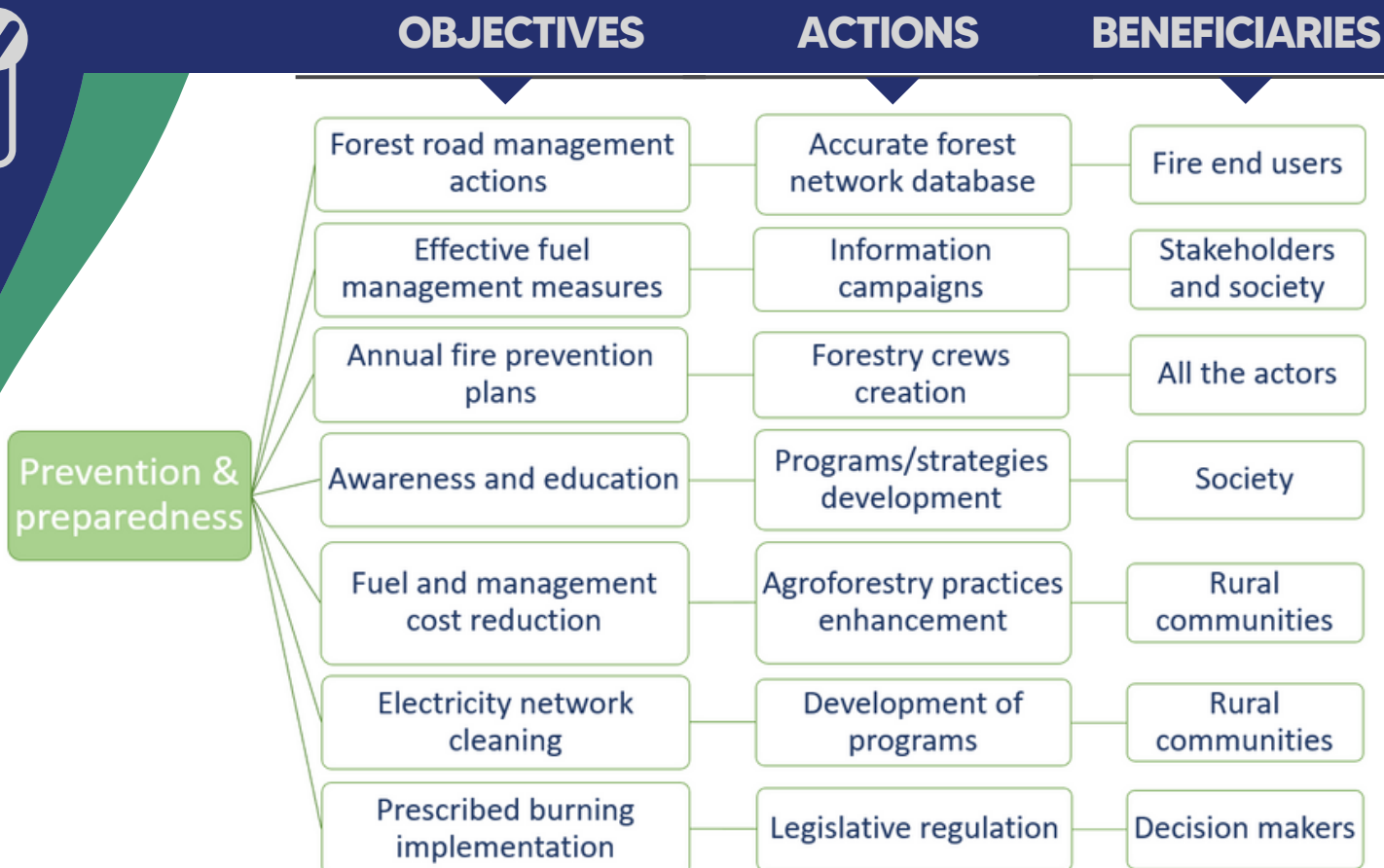
Understanding the risk

- Efficient forest fuel management and effective treatments
- Tools for improved risk assessment

Mobilise resources for effective action

- Tools to design, maintain, construct, finance and monitor forest roads
- Improve assessment for ignitions

WHAT NEEDS TO BE OVERCOME?





INTEGRATED CHALLENGES STRATEGY

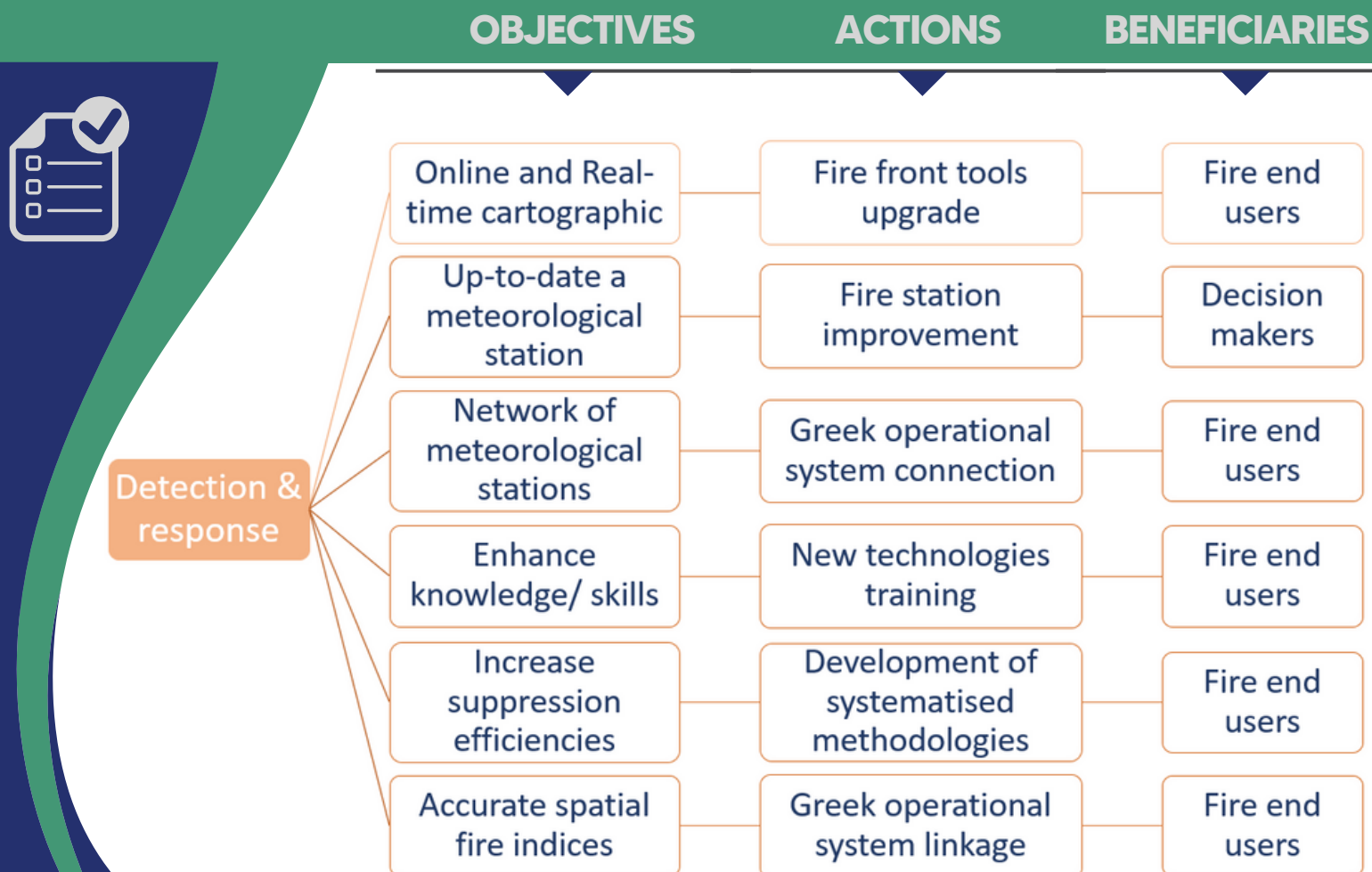
Through collaboration among stakeholders and adopting a proactive approach and innovative strategies, IFM can lead to long-term resilient ecosystems, reduced risks to human life and property, and sustainable land management practice. These key principles contribute to building more resilient communities and ecosystems in the face of wildfire challenges.

LIVING LAB VOICES - WISHLIST

Safe and improved early attack and suppression

- Guaranty accessibility for initial attack
- Training for initial attack
- Decision support tools for early attack

WHAT NEEDS TO BE OVERCOME?





INTEGRATED CHALLENGES STRATEGY

Mapping the stakeholders involved in IFM **helps identify their interests, roles, and potential contributions to wildfire management efforts**. However, it should be **complemented by a comprehensive approach that includes adequate resources** for fire agencies, advanced technology for fire detection and suppression, research on fire behaviour and ecology. Also, **collaboration between stakeholders**, including government agencies, communities, and environmental organisations.

LIVING LAB VOICES - WISHLIST

Smarter post-fire restoration and recovery

- New solutions to determine post-fire restoration priorities
- Integrated Fire Management: embedding long-term resilience if post-fire management
- Decision support tools for "smart" forest fire restoration
- Empowering and supporting civil society post-fire restoration efforts
- Long-term monitoring of restored areas
- Methods and tools to assess and address post-fire hydrological risks

WHAT NEEDS TO BE OVERCOME?



CHALLENGES

