



# INTEGRATED CHALLENGES STRATEGY

**Integrated Fire Management (IFM)** seeks to harness the ecological benefits of wildfires while minimising the damage they can cause to communities, infrastructure, and natural resources.

The views on fire management and governance have evolved towards **a more comprehensive and holistic approach**. As a result, IFM integrates the **entire fire cycle and its different components** of 1) Prevention & Preparedness; 2) Detection & Response; 3) Adaptation & Restoration. Through collaboration among stakeholders and **adopting a proactive approach and innovative strategies**, IFM can lead to long-term resilient ecosystems, reduced risks to human life and property, and sustainable land management practice.

## LIVING LAB VOICES - WISHLIST

### WUI monitoring and management

- Risk assessment and management at the WUI & Risk communication at the WUI

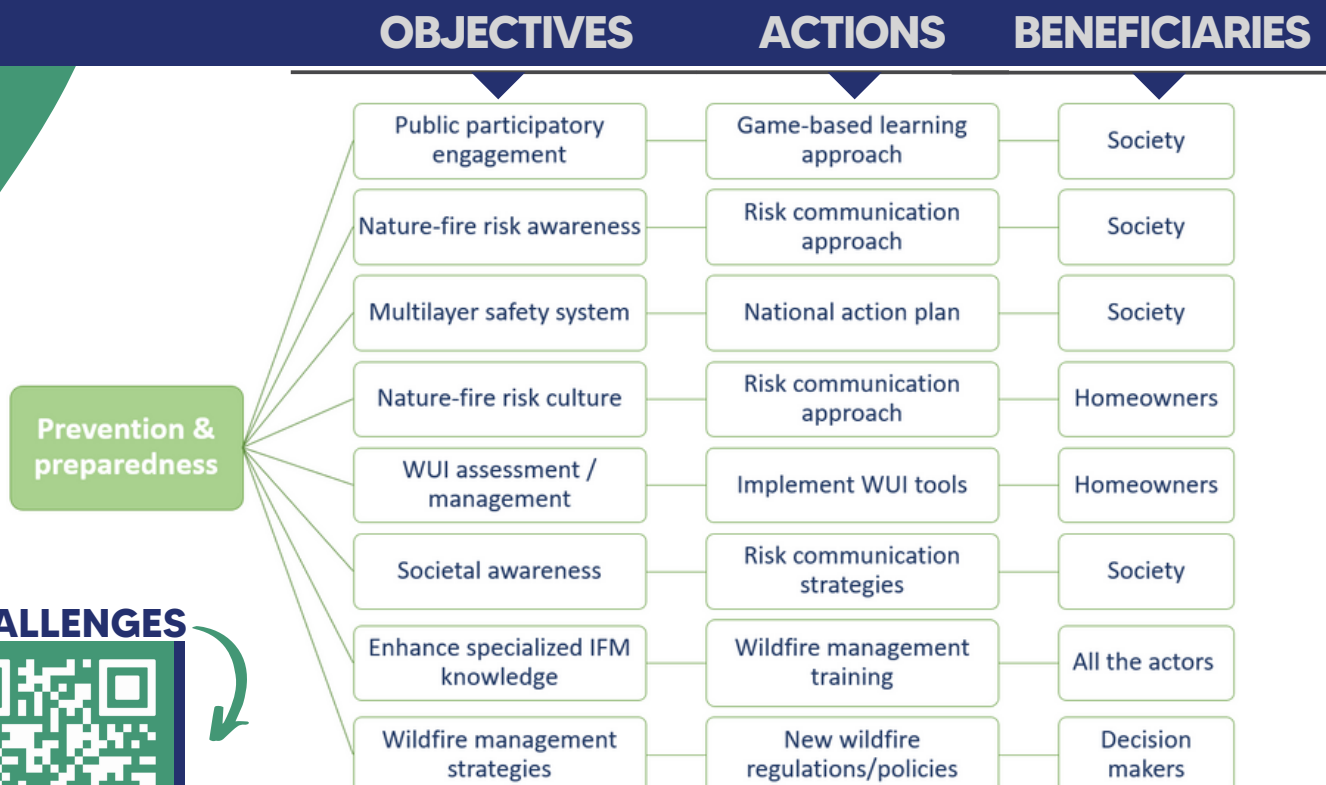
### Coherent multiactor wildfire governance

- Overview of wildfire management strategies and policies in Natura 2000 areas
- Training for: targeted stakeholders; IFM; prescribed burning and technical fire

### Risk Communication and awareness

- Science society interface for awareness for the public & participatory risk assessment
- Innovative tools for awareness raising as serious games
- Collaborative & participatory approaches in risk communication
- Tools and approaches for co-creation of risk communication strategies

## WHAT NEEDS TO BE OVERCOME?



### CHALLENGES

