



## INTEGRATED CHALLENGES STRATEGY

**Integrated Fire Management (IFM)** seeks to harness the ecological benefits of wildfires while minimising the damage they can cause to communities, infrastructure, and natural resources.

The views on fire management and governance have evolved towards a **more comprehensive and holistic approach**, recognising that it requires a multifaceted strategy linking the entire fire cycle and its components: 1) Prevention & Preparedness; 2) Detection & Response; 3) Adaptation & Restoration.

## LIVING LAB VOICES - WISHLIST

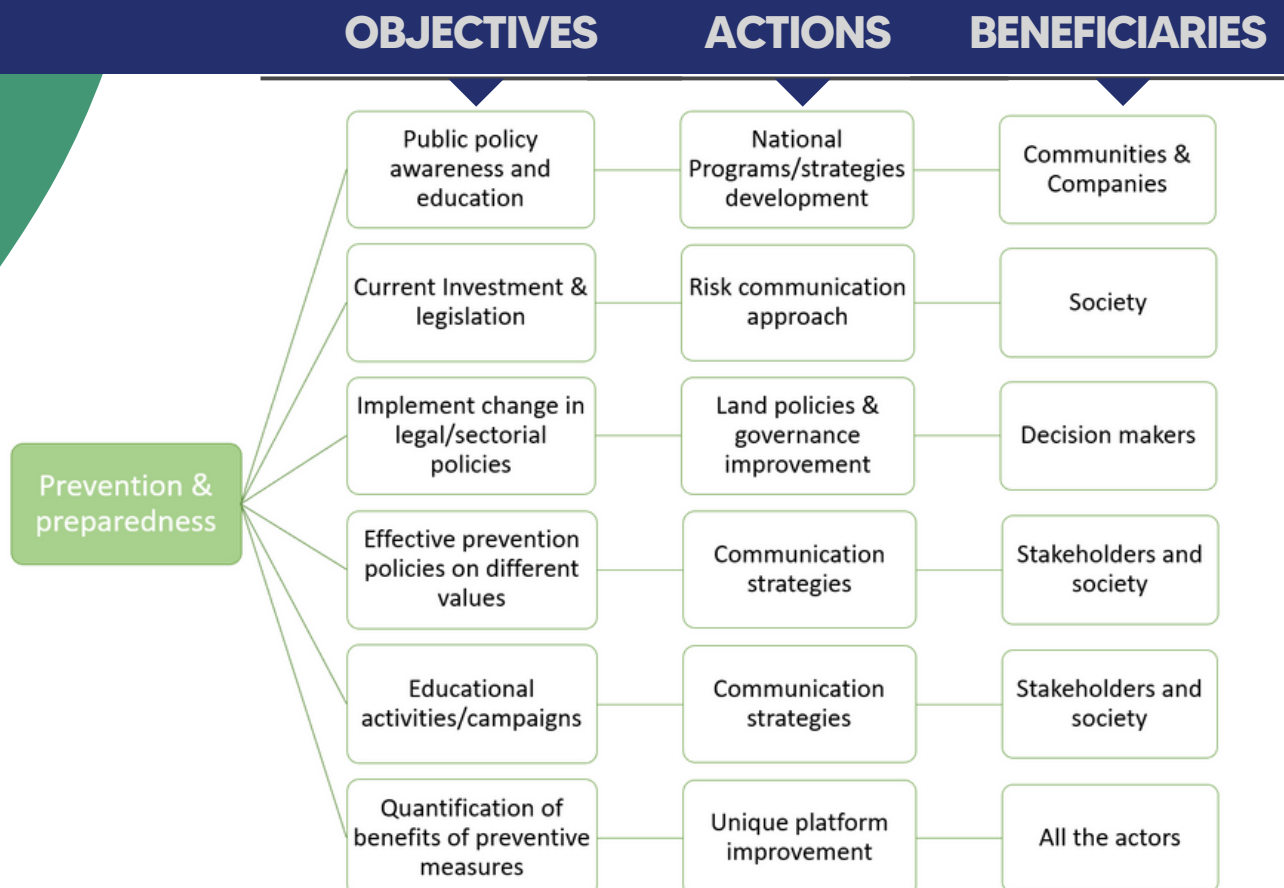
### Coherent multiactor wildfire Governance

- Prevention policies and Multiactor collaboration (via platforms)
- Benefits of preventive measures sharing via platform
- Overview of wildfire management strategies and update policies

### Education and awareness for targeted stakeholders

- Risk communication strategies and education campaigns
- Educational awareness for the public
- Capacity building for targeted stakeholders (policy makers and media)

## WHAT NEEDS TO BE OVERCOME?





# INTEGRATED CHALLENGES STRATEGY

Through collaboration among stakeholders and adopting a proactive approach and innovative strategies, IFM can lead to long-term resilient ecosystems, reduced risks to human life and property, and sustainable land management practice. These key principles contribute to **building more resilient communities and ecosystems in the face of wildfire challenges.**

## LIVING LAB VOICES - WISHLIST

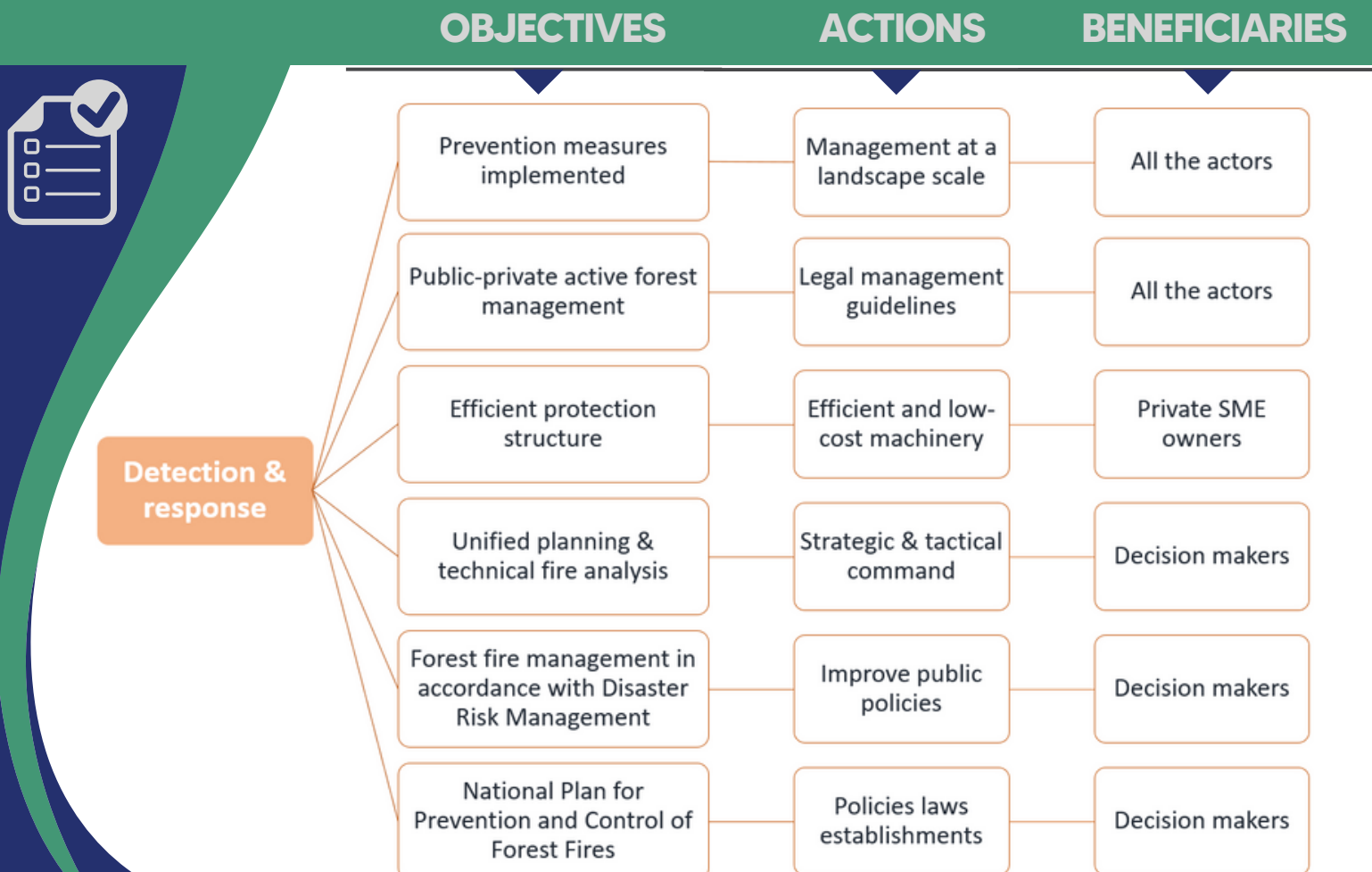
### Mobilise resources for effective action

- Legal forest fuel management and effective treatments
- Approaches and decision support tools to public and private active management

### Safe and improved early attack and suppression

- Decision support tools for response
- Efficient protection structure and incident management

## WHAT NEEDS TO BE OVERCOME?





# INTEGRATED CHALLENGES STRATEGY

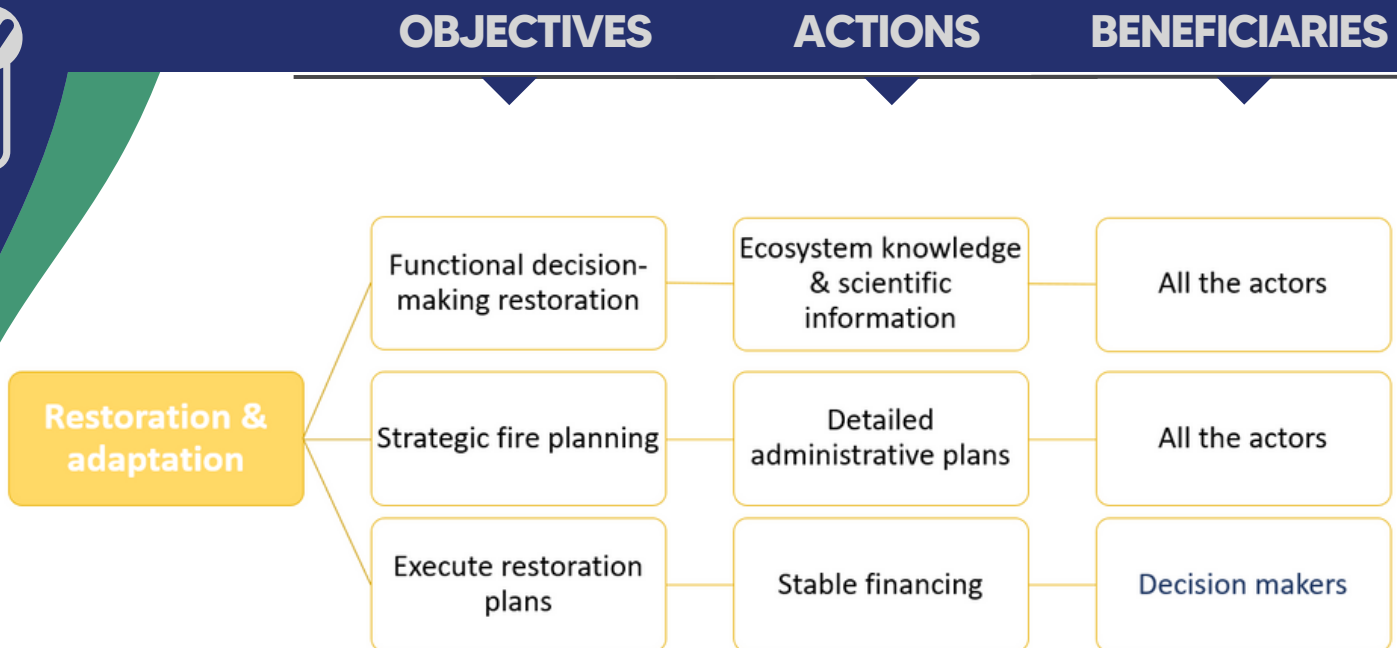
Mapping the stakeholders involved in IFM **helps identify their interests, roles, and potential contributions to wildfire management efforts.** However, it should be **complemented by a comprehensive approach that includes adequate resources** for fire agencies, advanced technology for fire detection and suppression, research on fire behaviour and ecology. Also, **collaboration between stakeholders**, including government agencies, communities, and environmental organisations.

## LIVING LAB VOICES - WISHLIST

### Smarter post-fire restoration and recovery

- Tools for functional decision making restoration
- Strategic Fire Planning: embedding executive restoration plans

## WHAT NEEDS TO BE OVERCOME?



### CHALLENGES

