



FIRE-RES

Innovative technologies & socio-ecological-economic solutions for fire resilient territories in Europe

VISUAL INSPIRATION MAP

CATALONIA - WILDFIRE PROFILE

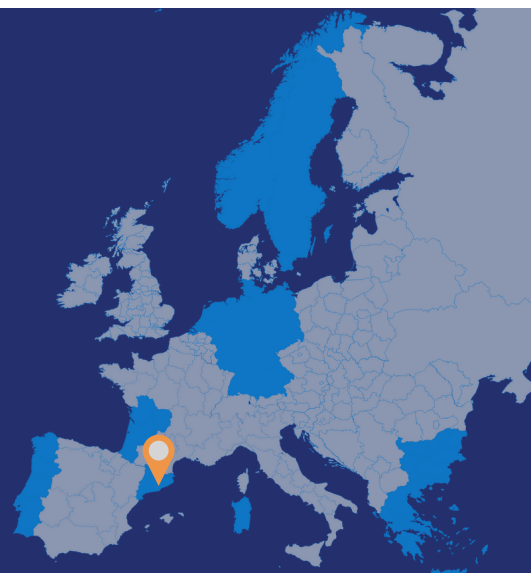
CATALONIA LIVING LAB

Reaching-up:

43.6°C
maximum
temperature
recorded in the
summer



< 30%
relative
humidity



>60 km/h

6.5% Other

23% Shrubland & grassland

29% Agricultural lands

41.5% Tree cover

LAND COVER



Scots pine
(*Pinus sylvestris*)



Aleppo Pine
(*Pinus halepensis*)



Holm oak
(*Quercus ilex*)

2012

17,922 HA BURNT

41°C RECORDED



Tree cover (7,749 ha)
Woodlands, shrublands &
grassland (7,727 ha)
Cropland (2,897 ha)



In 2012, the most important fire, the Jonquera fire, burned 12.898 ha in a north-westerly wind situation. The fire had a main run of more than 17 km in the first 10 h with maximum peaks of propagation speeds of 7.7 km/h, affecting more than 600 vulnerable elements including the main highway that connects Spain and France.

The Jonquera fire occurred on a simultaneous emergency scenario in which firefighters prioritised the protection of citizens and let the fire burn until better conditions allowed to safe and efficient firefighting operations.

DID YOU KNOW?



The fire suppression system is mainly driven by the **Catalan Fire and rescue Service (GENCAT)**.

Investment in wildfire prevention has been increasing during the last years reaching more than €M5.3 in 2022. Although recently the total burned area has been reduced, the speed of fires (ha burned per hour) has increased, which implies more dangerous and devastating fires.



VISUAL INSPIRATION MAP

CATALONIA - COMMUNITY OF WILDFIRE INNOVATION

GOVERNANCE

Catalonia forest ownership distribution:

76% private landowners

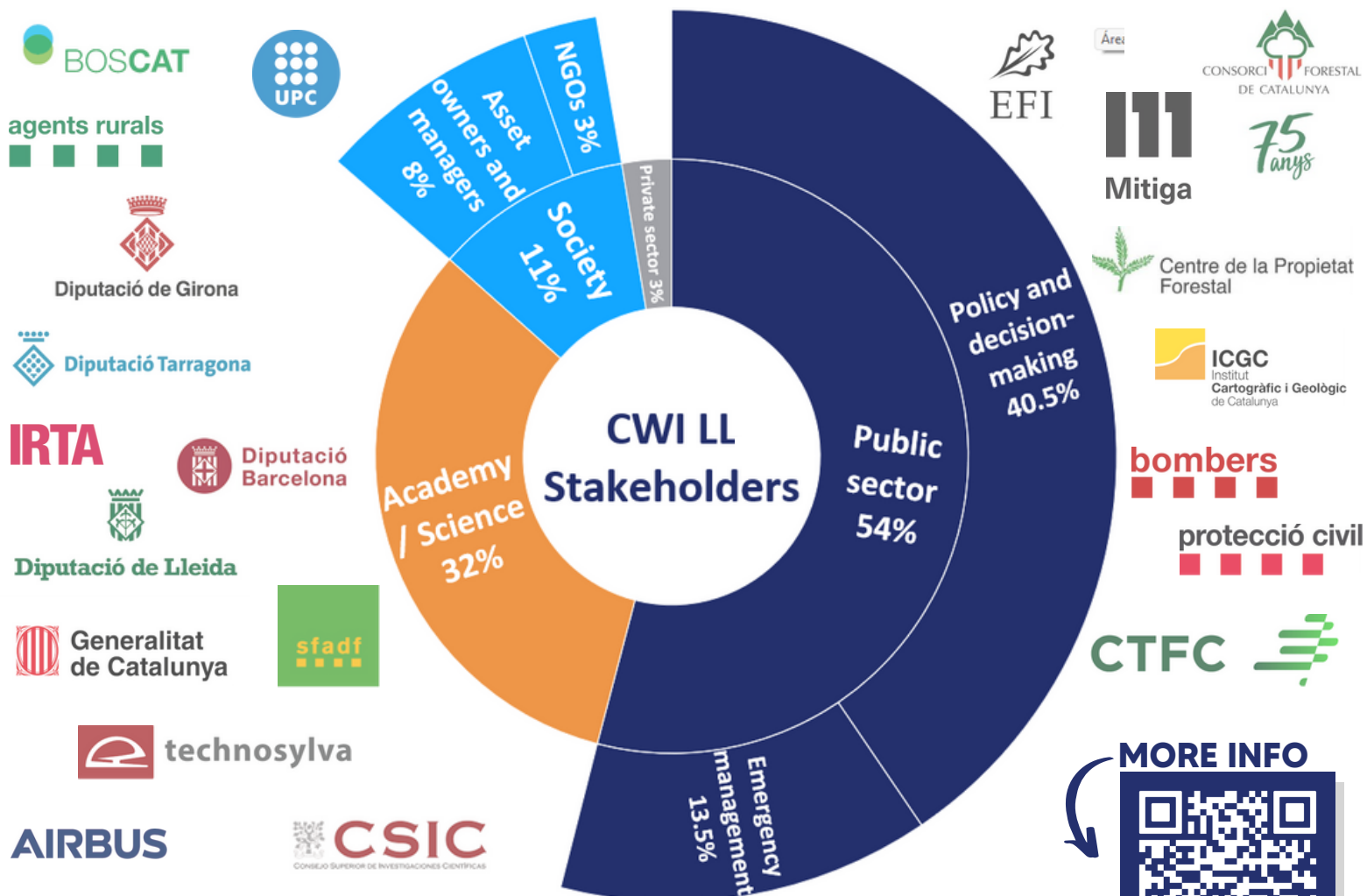
24% the State and public agencies



ACTORS INVOLVED

The Catalan community of wildfire innovations (CWI) integrates **37 members**, divided into 19 strategic members and 18 operational ones. The CWI members are classified into six types and distributed over the categories of the 4-helix of innovation.

FIRE-RES involves 5 national partners that include **research and outreach institutions** (CTFC, ICGC and EFI), a private company (Mitiga Solutions S.L.) and General Directorate of Prevention, Fire Fighting and Rescue from the Department of the Interior as emergency management sector enclosing 16 representatives from these institutions.



MORE INFO



This project has received funding from the European Horizon 2020 research and innovation programme under grant agreement No 101037419

