



INTEGRATED CHALLENGES STRATEGY

Integrated Fire Management (IFM) seeks to harness the ecological benefits of wildfires while minimising the damage they can cause to communities, infrastructure, and natural resources.

The views on fire management and governance have evolved towards a **more comprehensive and holistic approach**, recognizing that it requires a multifaceted strategy linking the entire fire cycle and its components:

- 1) Prevention & Preparedness; 2) Detection & Response; 3) Adaptation & Restoration.

LIVING LAB VOICES - WISHLIST

Training and education for targeted stakeholders

- Training in the use of fire behaviour models and modern equipment
- Capacity building for targeted stakeholders (policy makers and media)
- Improved knowledge transfer across countries

Understanding the risk

- Efficient fuel management and effective treatments & Identification of vulnerable areas

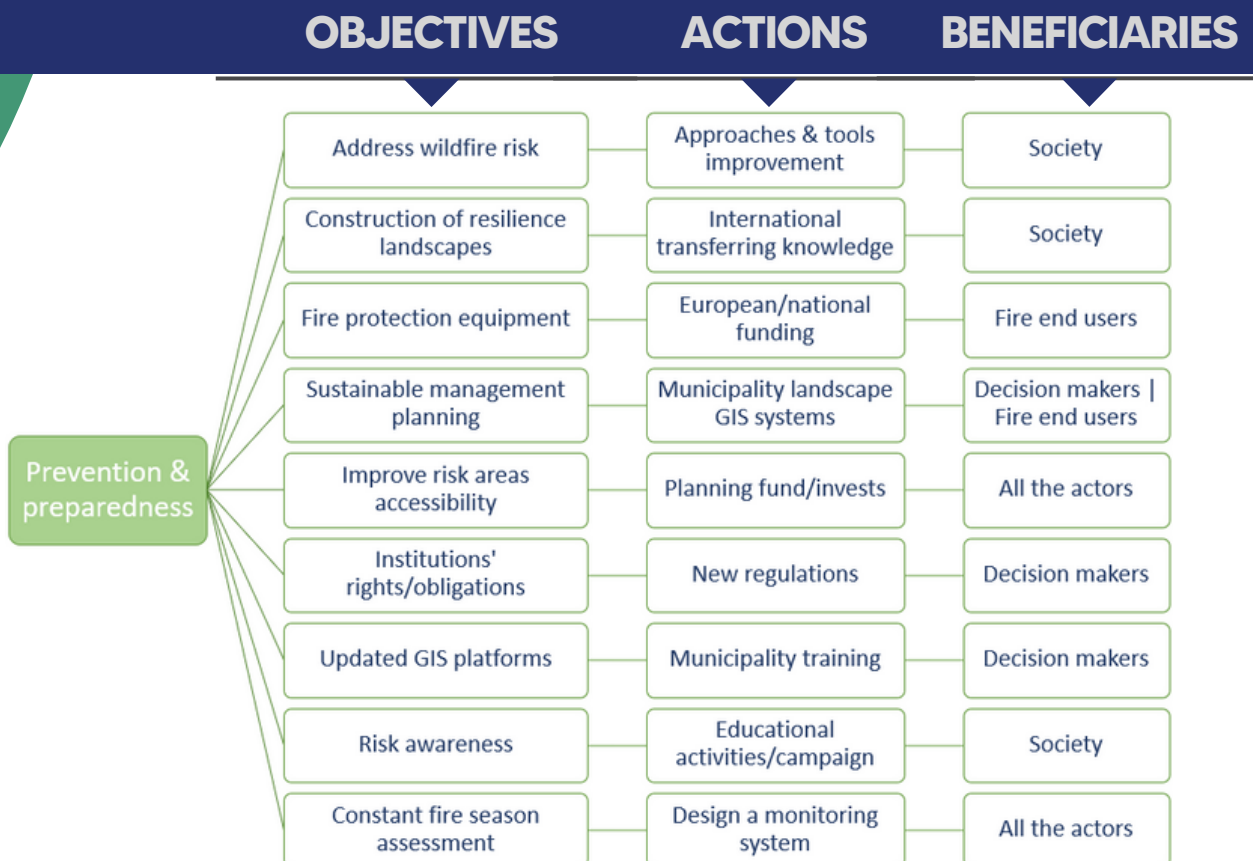
Empowering action at community at landscape levels

- Increase prevention capacities in remote rural areas
- Empowering stakeholders (municipalities) for resilient landscapes

Risk communication and awareness

- Approaches, methods and tools to insert wildfire risk education in schools

WHAT NEEDS TO BE OVERCOME?





INTEGRATED CHALLENGES STRATEGY

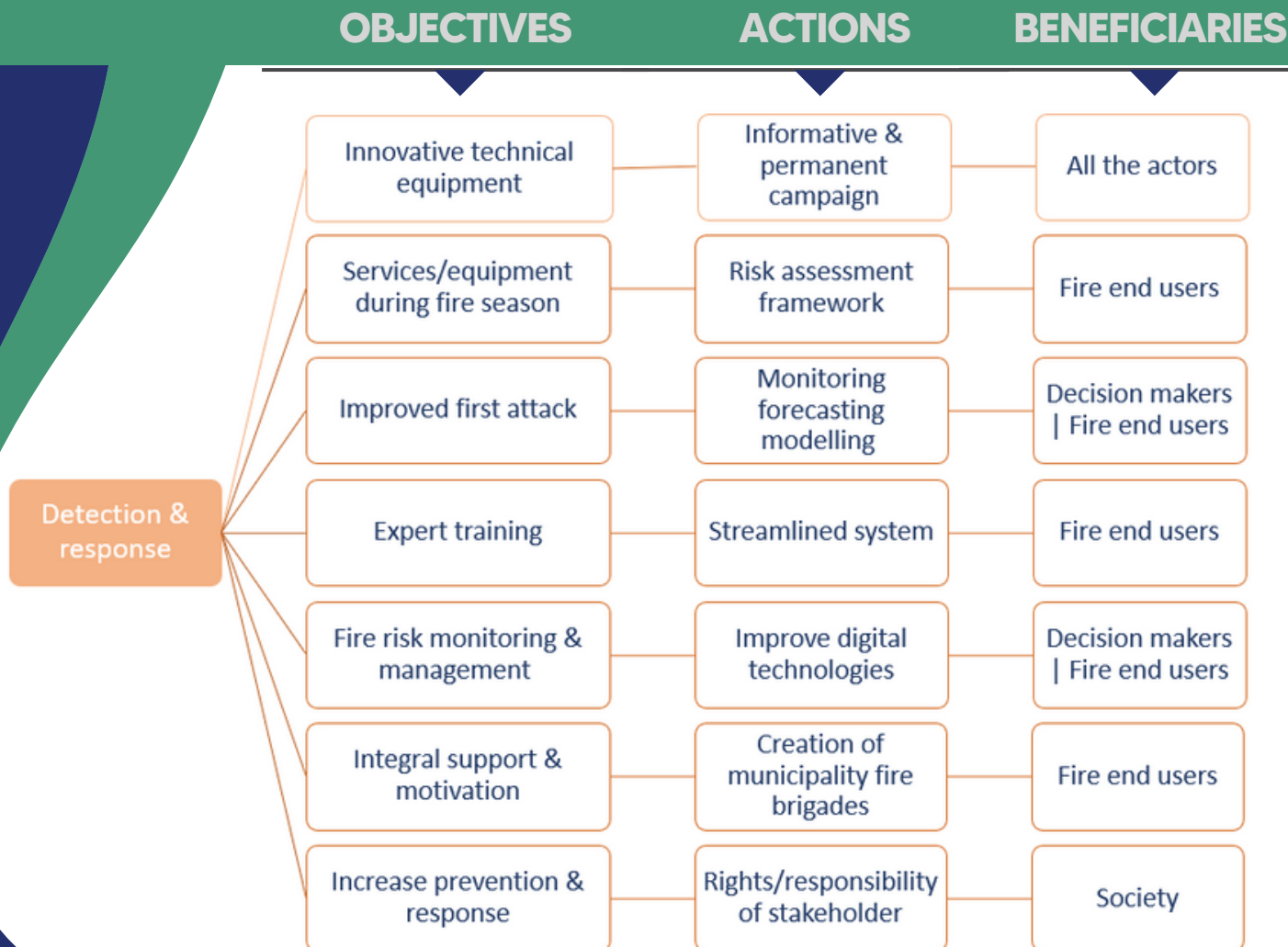
Through collaboration among stakeholders and **adopting a proactive approach and innovative strategies**, IFM can lead to long-term resilient ecosystems, reduced risks to human life and property, and sustainable land management practice. These key principles contribute to **building more resilient communities and ecosystems in the face of wildfire challenges.**

LIVING LAB VOICES - WISHLIST

Safe and improved early attack and suppression

- Integral support for Voluntary Fire brigades
- Increase response capacities in remote rural areas
- Approaches and tools to assess and manage the risk posed by rural and urban infrastructures

WHAT NEEDS TO BE OVERCOME?





INTEGRATED CHALLENGES STRATEGY

Mapping the stakeholders involved in IFM helps identify their interests, roles, and potential contributions to wildfire management efforts. However, it should be complemented by a comprehensive approach that includes adequate resources for fire agencies, advanced technology for fire detection and suppression, research on fire behaviour and ecology. Also, collaboration between stakeholders, including government agencies, communities, and environmental organisations.

LIVING LAB VOICES - WISHLIST

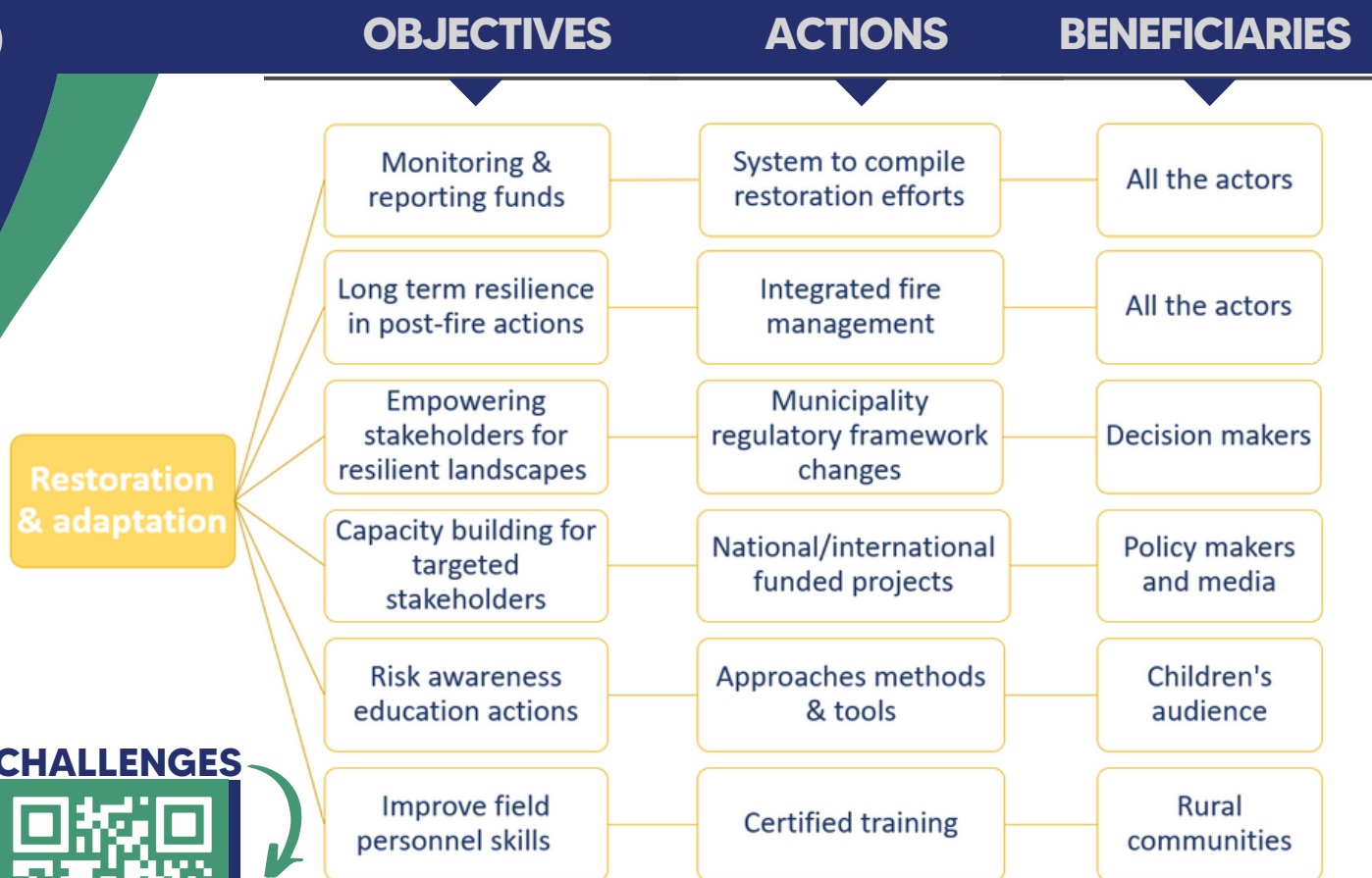
Smarter post-fire restoration and recovery

- Integrated Fire Management: embedding long-term resilience if post-fire management
- Information systems for compiling information on restoration actions

Risk communication and awareness

- Risk communication to the general public to gain support

WHAT NEEDS TO BE OVERCOME?



CHALLENGES

