

[View this email in your browser](#)

Welcome to the third edition of the FIRE-RES newsletter!

In this new FIRE-RES newsletter, you can learn more about the latest project developments, discover our new deliverables and publications, learn more about our Living Labs and much more!

- [Latest news from FIRE-RES](#)
- [News from our sister projects](#)
- [New deliverables](#)
- [Publications](#)
- [Discover our Living Labs](#)
- [Upcoming events](#)

Enjoy your read and please share the newsletter with relevant people in your network!

News from FIRE-RES



Introducing FIRE-RES Geo Catch App

The FIRE-RES Geo Catch App allows users to make field inventories using mobile devices and pictures. It will help researchers to identify fuel types and landscapes in Europe and will contribute to improve fire risk assessments! You can use the app from your phone or computer. [Read the article.](#)



Help us shape the European Fire Education Platform!

We are developing an online platform to share knowledge about extreme wildfires and build a common risk culture. We invite you to take the questionnaire and tell us what you would like to find on our Fire Education Platform! [Read the article.](#)



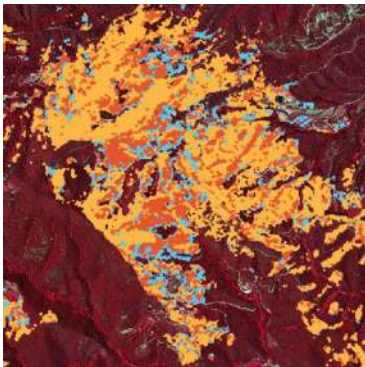
risk awareness

The Wageningen University created a serious game called "Play with Fire". It is a puzzle-based serious game that encourages players to collaboratively solve a landscape puzzle. The game aims to evaluate and educate players about wildfire risk. [Read the article.](#)



FIRE RES joined the 8th International Wildland Fire Conference in Porto

FIRE-RES was present at the 8th International Wildland Fire Conference to share views with the international community involved in landscape fire management. Partners presented the innovations that will soon be available. [Read the article.](#)



EU to set up a forest monitoring framework

Since 2007, there have been no harmonised forest monitoring requirements at European level. The European Union aims to remedy this lack of data by establishing an EU Forest Monitoring Framework, which could support awareness raising and decision-making. [Read the article.](#)



7 key takeaways on forest fires from the new IPCC report

The IPCC's Synthesis Report of the 6th Assessment Report summarises the state of knowledge on climate change. We have outlined the 7 key messages to take home on the impact of climate change on forest and fire risk. [Read the article.](#)



Fire, Powered by Firelogue

This online platform serves as a comprehensive hub, providing valuable insights, case studies, publications, events and best practices in wildfire risk management. It aims to bridge the gap between research and practice. [Learn more.](#)



Deliverables



Advancing knowledge on post-fire forest resilience and restoration

This deliverable reveals that numerous factors influence the recovery of vegetation in fire-prone areas and is an important step for **improving post-fire restoration** and towards our **Integrated Fire Management approach**. [Read more.](#)



Lessons learned on Extreme Wildfire Events

Our first deliverable highlights the need for a **holistic approach** that takes into account **environmental, socio-economic, and civil security factors** to address the growing threat of Extreme Wildfire Events in Europe. It provides a common conceptual framework for all FIRE-RES partners. [Read more.](#)

Publications

- [Seasonal fire danger forecasts for supporting fire prevention management in an eastern Mediterranean environment: the case of Attica, Greece.](#) Jaime Carrasco, Rodrigo Mahaluf, Fulgencio Lison, Cristobal Pais, Alejandro Miranda, Felipe del la Barra, David Palacios, Andres Weintraub, Nat. Hazards Earth Syst. Sci. May 2023.

Discover the FIRE-RES Living Labs

Living Labs are **open innovation ecosystems** that can foster collaboration among the public sector, scientific communities, private companies and citizen associations. In each newsletter, three Living Labs are showcased.



Nouvelle-Aquitaine, France

In this area, large-scale fires have been a significant problem since the mid-1900s. Even now, there is a notable remembrance of a series of fires that took place from 1946 to 1949. The presence of young maritime pines exposes the area to the risk of future fire occurrences. [Learn more on the Living Lab.](#)



Greece

Our greek Living Lab is located in a territory characterized by wildland-urban interface (WUI), recreation and active resource management in state- and privately-owned forests interspersed with agricultural lands of ever-growing fire risks. [Learn more on the Living Lab.](#)



Germany - The Netherlands

The Germany-The Netherlands Living Lab is located in a transboundary area of these two countries. These are non-traditionally fire-prone countries. Yet changing fire regimes are bringing in new wildfires and the Living Lab will help preparing the future. [Learn more on the Living Lab.](#)

Discover all Living Labs

25-27 September 2023

[10th International Civil Protection Conference & New Technologies](#)

Athens, Greece

23-29 June 2024

[XXVI IUFRO World Congress](#)

Stockholm, Sweden

[More events](#)



Extreme wildfire events are becoming a major environmental economic and social threat across. Funded by the European H2020 research and innovation programme, [FIRE-RES](#) develops an integrated fire management strategy to efficiently and effectively address extreme wildfires in Europe.



[Website](#)



[Facebook](#)



[Twitter](#)



[LinkedIn](#)



This project has received funding from the European Horizon 2020 research and innovation programme under grant agreement No 101037419. It does not necessarily reflect the view of the European Union and in no way anticipates the Commission's future policy in this area.

This email was sent to <<Email Address>>

[why did I get this?](#) [unsubscribe from this list](#) [update subscription preferences](#)

FIRE-RES · Solsona · Solsona, Spain 1420 · Spain

