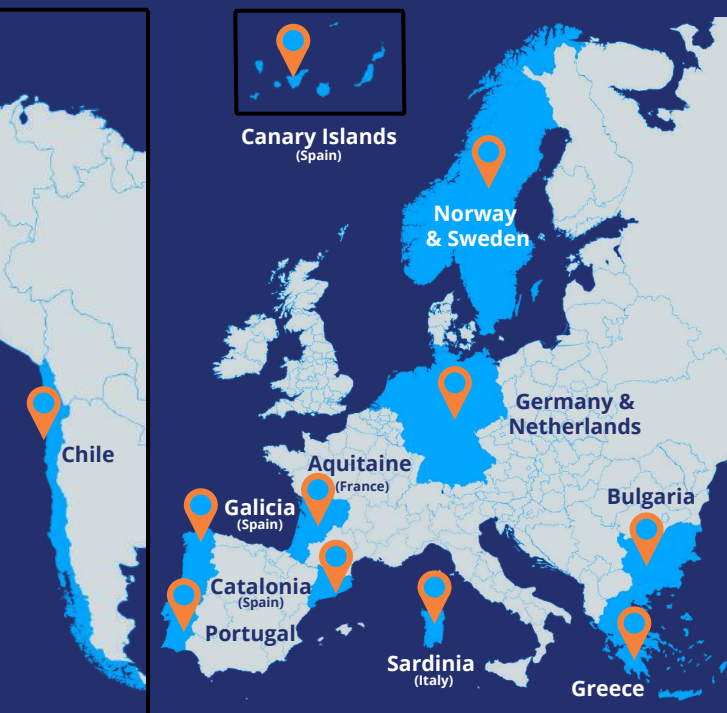


What will FIRE-RES do?

FIRE-RES will develop, deploy, demonstrate and upscale **34 innovative solutions** addressing the challenges imposed by Extreme Wildfire Events. These actions will be tested in real conditions throughout 11 so-called "**Living-Labs**".

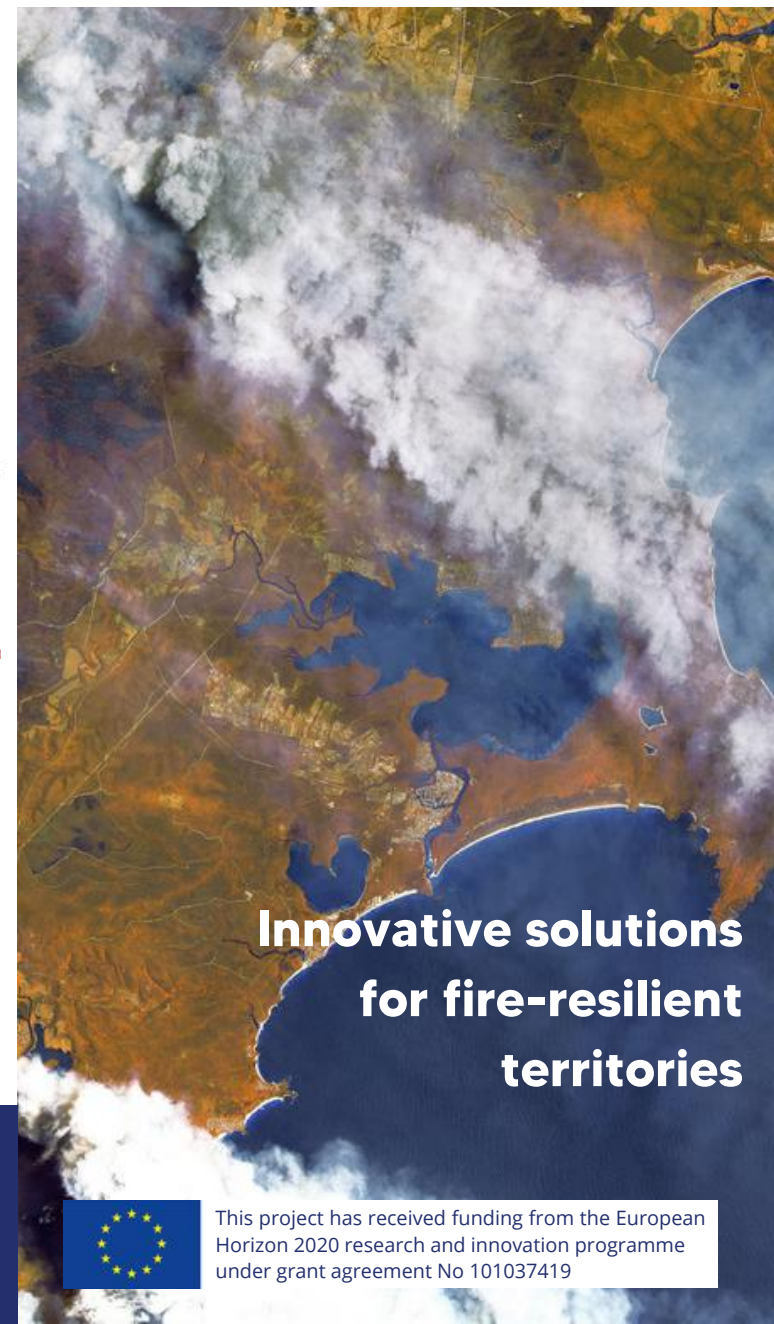
FIRE-RES Living Labs and partners are located in a broad gradient of regions across Europe and beyond.



Partners



FIRE-RES



**Innovative solutions
for fire-resilient
territories**



Subscribe to our newsletter



Get in touch

www.fire-res.eu

Coordinator

fire-res@ctfc.cat

Communication

fireres@euromontana.org



This project has received funding from the European Horizon 2020 research and innovation programme under grant agreement No 101037419

What is FIRE-RES?

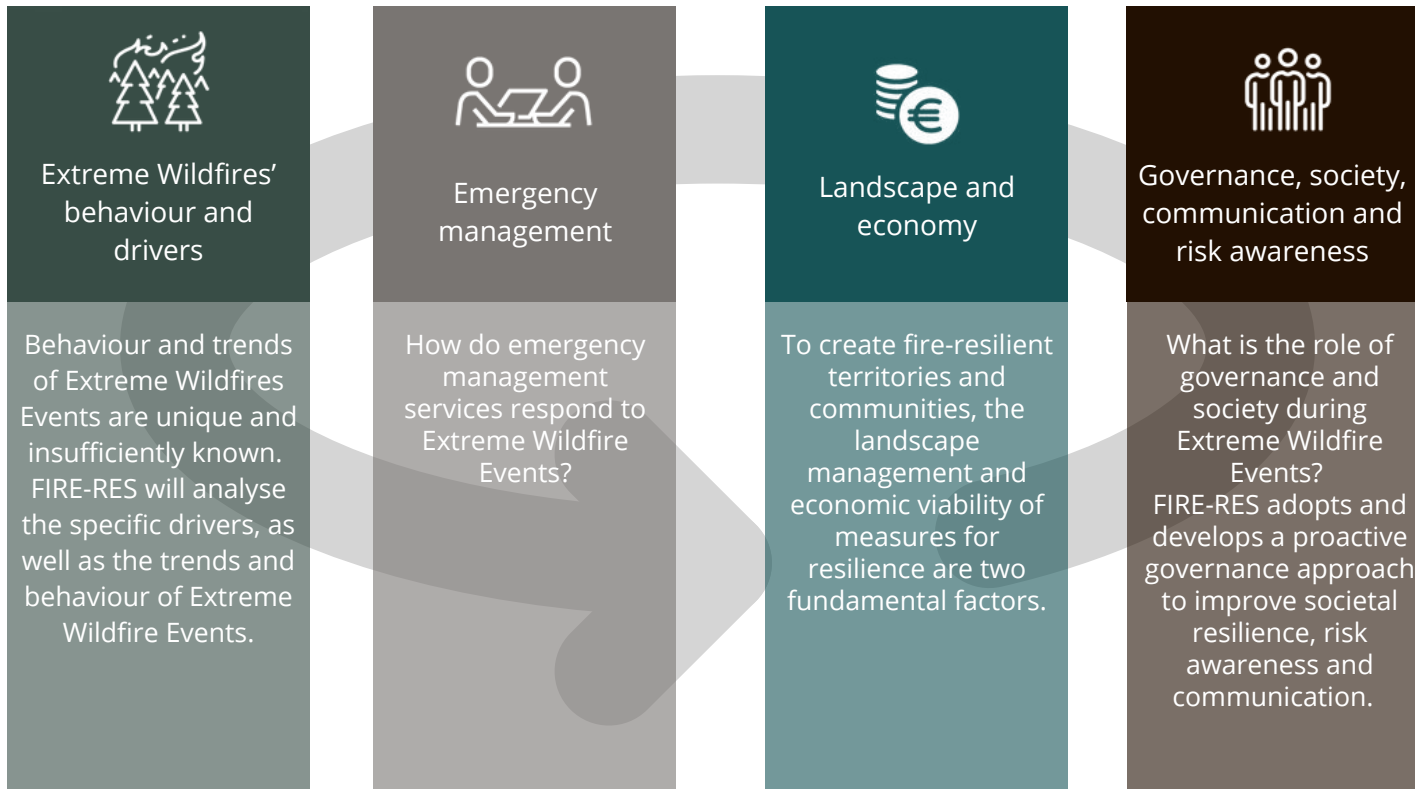
Extreme Wildfire Events are becoming a major environmental, economic and social threat across the world. As the limits of fire suppression-centred strategies become evident, practitioners, researchers and policymakers increasingly recognise the need to develop novel approaches that address the root causes and impacts of Extreme Wildfire Events.

FIRE-RES is a **4-year project** (2021-2025) led by the Forest Science and Technology Centre of Catalonia in Spain and funded under the European Union's H2020 research and innovation programme.

FIRE-RES aims to support the transition towards more **resilient landscapes and communities** facing Extreme Wildfire Events in Europe and beyond.

Our Approach

FIRE-RES is built around the concept of **Integrated Fire Management**. It is a planning and operational approach that includes social, economic, cultural and ecological dimensions. Its objective is to minimize the damage caused by wildfires and maximise its benefits. To move towards an Integrated Fire Management approach, FIRE-RES adopts **4 main pillars**:



Our objectives

-  To set the definition of **Extreme Wildfire Events** and use it as the main axis to address the challenge ahead
-  To develop, demonstrate and deploy innovations at the **technological, social, health/safety, administrative, ecological and economic levels**
-  To integrate and upscale results **from the niche-level innovations implemented locally in Living Labs across Europe and beyond**
-  To **raise societal awareness** about Extreme Wildfires and **transfer enabling knowledge** to stakeholders